



Urban Planning

Advisory & Consulting

Development

Management



## Profile

SCon is specialized on the development and realization of projects focusing on the optimization of project return and identification of resources for improvements. Our experience is based on new projects and refurbishment projects for hotel, retail, health care, leisure and housing. Our ecological concepts create sustainable developments and solutions protecting our environment.





Urban Planning    Advisory & Consulting    Development    Management

## Company

SCon is an A to Z real estate service provider; specializing in urban planning, technical and commercial project development, financial engineering and the complete project management from sites acquisition through to turn-key/handover phase. SCon offers its comprehensive real estate services as a package or as desired component links for integration into the value-chain of an existing project. With our close network and long-term relationship to experienced partners we offer our market intelligence, expertise and influence to help you in achieving your business goals.

## Services Profile

### Development Management

- Site Analysis
- Market Research

### Consulting

- Feasibility Studies and Reports
- Provision of Concepts
- Marketing
- Due Diligence

### Technical Project Development

- Preliminary Studies
- Organisation of Architectural Contests

### Commercial Project Development

- Financial Engineering

### Project Management

- Contractual Coordination of all Works & Parties
- Obtaining Construction Permits
- Organisation of Competitions and Contracting of Construction Works
- Mediator between Clients and Customers

### Project Supervision

- Coordination and Supervision of the Project

### Project Controlling

- Quality Control
- Time Schedule Control

### Commercial Project Management

- Controlling of Budgets
- Project Accounts

### Marketing

- Development of Marketing Concepts
- Acquisition of Tenants
- Preparation and Mediation of Investment Decisions

### Investment Management

### Property Management

### Property Valuation



Urban Planning

Advisory & Consulting

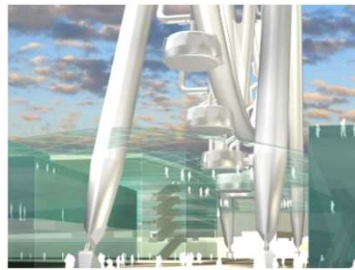
Development

Management

## Selected References



Historical Post Office, Berlin  
28.000 m<sup>2</sup> GFA



Giant Wheel Berlin Height 175 m



Ringmessehaus, Leipzig  
36.000 m<sup>2</sup> GFA



East Harbor, Berlin  
21.000 m<sup>2</sup> GFA



Yenidze, Dresden 11.000 m<sup>2</sup> GFA



Former Freiherr-von-Fritsch Barracks, Hannover  
269.000 m<sup>2</sup> plot size



# S•Con

Urban Planning

Advisory & Consulting

Development

Management



Premium Health Care & Hotel, Berlin  
28.000 m<sup>2</sup> GFA



Reconstruction of the old Groterjan Brewery  
Berlin, 2.000 m<sup>2</sup> GFA



Deck One, Berlin  
Condominiums, 11.000 m<sup>2</sup> GFA



Prager Platz, Berlin  
Hotel, Fitness, Retail, Housing  
28.000 m<sup>2</sup> GFA



Palace Hotel, Dresden  
17.000 m<sup>2</sup> GFA



Alpen Adria Zentrum, Klagenfurt  
27.983 m<sup>2</sup> GFA



SCon GmbH & Co. KG

Albert-Einstein-Ring 1  
14532 Kleinmachnow  
Germany

Limited company:  
SCon Projekt GmbH  
CEO: Dipl.-Ing. Joachim Stöhr

fon +49 (0)33 203 850 881  
fax +49 (0)33 203 850 882

info@sconprojekt.com  
www.sconprojekt.com